

Tuba

City Sound Drum & Bugle Corps
Brass Technique

DARREN LONEY
& SHANE REIDER

1 one breath... embellish (-4) (-4) sim.

2 one breath... embellish (-4) (-4) sim.

3 one breath... embellish (-4) (-4) sim.

4 one breath... embellish (-4) (-4) sim.

5A embellish (-1) (-1) sim.

5B

embellish (-1) (-1) sim.

Musical notation for section 5B, consisting of two staves. The first staff begins with a bass clef, a key signature of one flat (B-flat), and a time signature of 4/4. It contains a whole note G2, followed by a whole rest, a whole note A2 with a sharp sign (#), another whole rest, a whole note B2, and a final whole rest. A dynamic marking of *mf* is placed below the first note. A hairpin crescendo symbol is positioned below the first staff, and a hairpin decrescendo symbol is positioned below the second staff. The second staff continues the melody with a whole note G2, a whole rest, a whole note F2, a whole rest, a whole note E2, a whole rest, a quarter note D2 with a fermata, and a final whole rest.

6A

stagger breathe... embellish (-1) continue stagger breathe...

Musical notation for section 6A, consisting of five staves. The first staff begins with a bass clef, a key signature of one flat (B-flat), and a time signature of 4/4. It contains a whole note G2, followed by a whole rest, a whole note F2, a whole rest, a quarter note E2 with a fermata, a whole rest, a whole note D2, a whole rest, a quarter note C2 with a flat sign (b), a whole rest, a quarter note B1 with a fermata, and a final whole rest. A dynamic marking of *mf* is placed below the first note. A hairpin decrescendo symbol is positioned below the first staff. The second staff continues the melody with a quarter note B1 with a fermata, a whole rest, a whole note A1, a whole rest, a quarter note G1 with a fermata, a whole rest, a whole note F1, a whole rest, a quarter note E1 with a fermata, and a final whole rest. The third staff continues with a quarter note D1 with a fermata, a whole rest, a whole note C1, a whole rest, a quarter note B1 with a fermata, a whole rest, a whole note A1, a whole rest, a quarter note G1 with a fermata, and a final whole rest. The fourth staff continues with a quarter note F1 with a fermata, a whole rest, a whole note E1, a whole rest, a quarter note D1 with a fermata, a whole rest, a whole note C1, a whole rest, a quarter note B1 with a flat sign (b) and a fermata, and a final whole rest. The fifth staff continues with a quarter note A1 with a fermata, a whole rest, a whole note G1, a whole rest, a quarter note F1 with a fermata, a whole rest, a whole note E1, a whole rest, a quarter note D1 with a fermata, and a final whole rest.

6B

stagger breathe... embellish (-1) continue stagger breathe...

Musical notation for section 6B, consisting of four staves. The first staff begins with a bass clef, a key signature of one flat (B-flat), and a time signature of 4/4. It contains a whole note G2, followed by a whole rest, a whole note F2, a whole rest, a quarter note E2 with a fermata, a whole rest, a whole note D2, a whole rest, a quarter note C2 with a flat sign (b), a whole rest, a quarter note B1 with a fermata, and a final whole rest. A dynamic marking of *mf* is placed below the first note. A hairpin decrescendo symbol is positioned below the first staff. The second staff continues the melody with a quarter note B1 with a fermata, a whole rest, a whole note A1, a whole rest, a quarter note G1 with a fermata, a whole rest, a whole note F1, a whole rest, a quarter note E1 with a fermata, and a final whole rest. The third staff continues with a quarter note D1 with a fermata, a whole rest, a whole note C1, a whole rest, a quarter note B1 with a fermata, a whole rest, a whole note A1, a whole rest, a quarter note G1 with a fermata, and a final whole rest. The fourth staff continues with a quarter note F1 with a fermata, a whole rest, a whole note E1, a whole rest, a quarter note D1 with a fermata, a whole rest, a whole note C1, a whole rest, a quarter note B1 with a flat sign (b) and a fermata, and a final whole rest.

7

(-4)

(-4) sim.

13

19

8

long

13

17

21

26

9

0

(-3)2

1

15

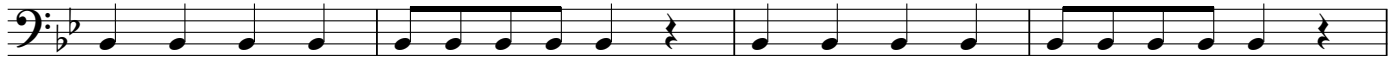
1/2

2/3

10

default - full length

(-4) staccato - separated



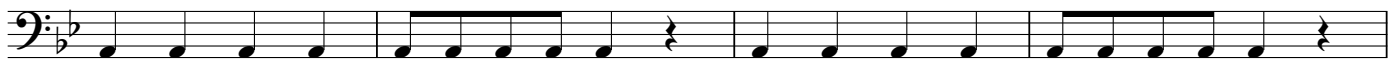
14 accent - one dynamic stronger

(-4) marcato - separated & stronger



18 default - full length

(-4) staccato - separated



22 accent - one dynamic stronger

(-4) marcato - separated & stronger



26 sim...



30



34



38



42



46

